

Calvert Vineyard

4.6 ha

History and Location

Calvert Vineyard is located just two km east of the Elms Vineyard on Felton Road. The gentle north-east facing slope lies immediately below the hills of the Bannockburn Gold Sluicings, now a historic park. The tailraces of Bailey's and Pipeclay Gullys', that carried away massive amounts of sluiced gold workings, flank the vineyard to the west and east respectively and provide helpful cold air drainage to minimise frost risk. The vineyard land had been home to a few sheep, rabbits and briar bushes prior to the planting of vines in 2001. Felton Road started leasing the entire Calvert Vineyard in 2001 (10.2ha) and in 2013 purchased outright the Willows, Springs and Aurum Blocks totalling 4.6 ha of Pinot Noir.



Soils

The vineyard is comprised entirely of the *Bannockburn* soil series classified as “deep silt loams.” The soils are consistent across and down the slope except a heavier; more silt laden component appearing in the south-eastern corner (Willows Block). The soil is derived from a mixture of fine textured lake-bed sediments (tertiary clays) and quartz sands along with quartz and fine schist gravels. There is a shallow 20-25cm coating of loess on the surface. Deep down (over 1-2m) there are fine sandy loams and bands of sands, silts and rounded quartz gravels with many dendritic accumulations of calcium carbonate. The soils are regarded as having reasonably high natural fertility with good water-holding capacity. Despite their dense texture, there are no impenetrable layers.

Planting

Felton Road designed and planted the Aurum, Willows and Springs Blocks in 2001 to three clones of Pinot Noir (B667, B777, B115). Planting density is 3500 vines/ha with three different rootstocks (3309, 101.14, Riparia Gloire). Standard VSP canopy management is employed using a cane pruned double Guyot. The viticulture is 100% organic and biodynamic and is fully certified by Demeter.



Vineyard Characteristics

With its low elevation (215-228 metres) and even soil distribution, the grapes ripen early and very consistently at Calvert Vineyard. Normally, the fruit ripens earlier than The Elms Vineyard due to its lower elevation, more sunshine (less shading from the western hills), Dijon clones and range of rootstocks. The wines have excellent texture and mouthfeel with floral aromatics and ripe dark fruits. The tannins are fine and focused with a distinct minerality.

FELTON ROAD WINES LTD
BANNOCKBURN
CENTRAL OTAGO NEW ZEALAND
www.feltonroad.com

TEL 64 3 445 0885 FAX 64 3 445 0881 E-MAIL wines@FeltonRoad.com



FELTON ROAD

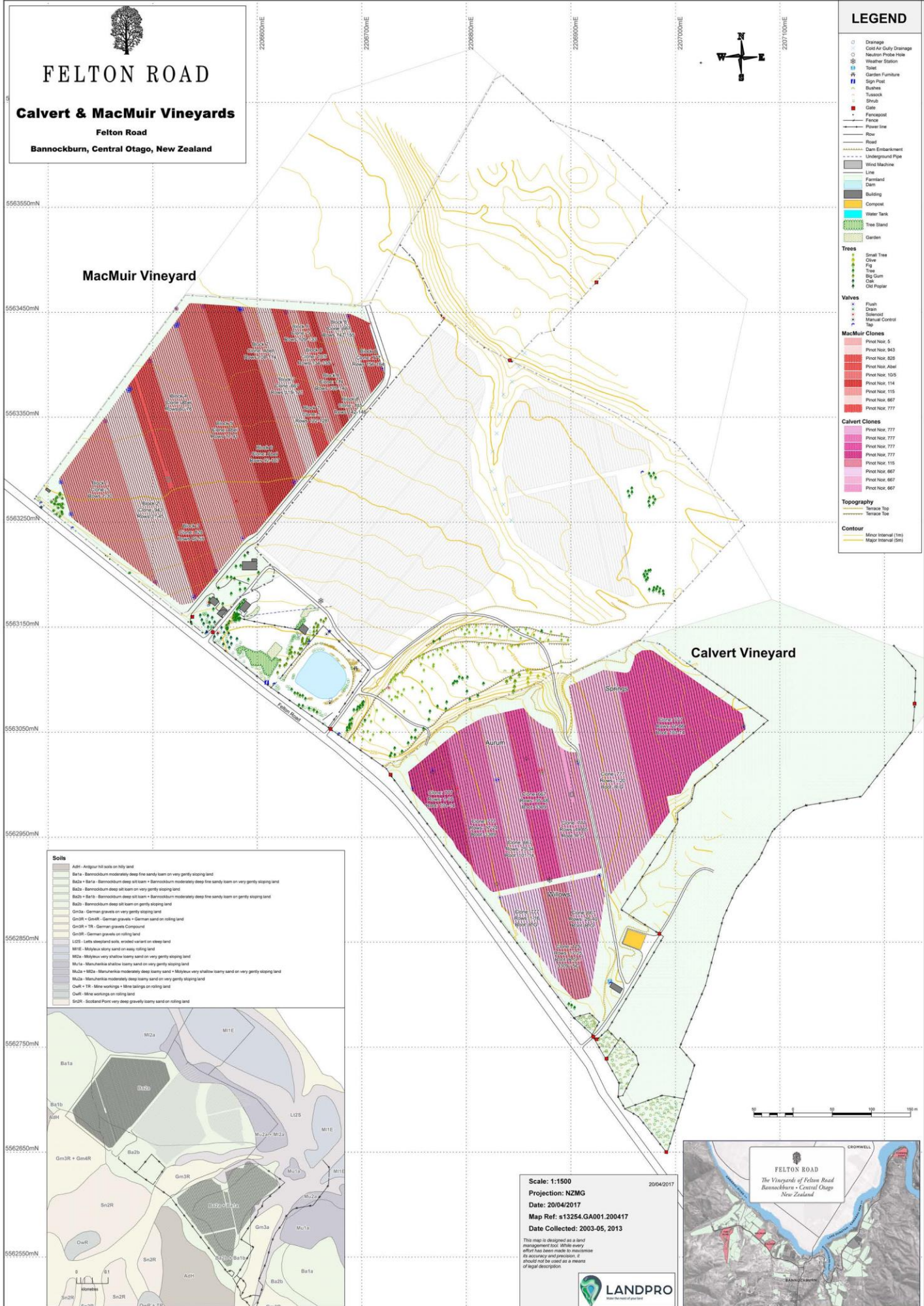
Calvert & MacMuir Vineyards

Felton Road

Bannockburn, Central Otago, New Zealand

LEGEND

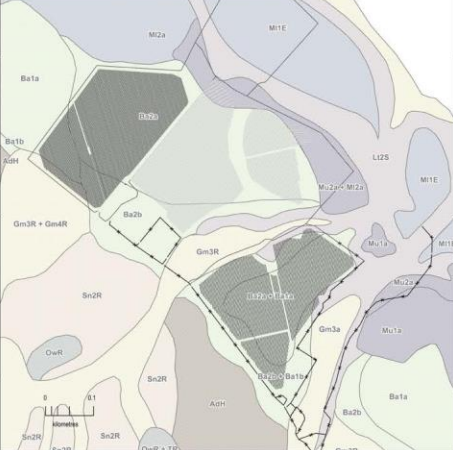
- Drainage
 - Cold Air Gully Drainage
 - Neutron Probe Hole
 - Weather Station
 - Toilet
 - Garden Furniture
 - Sign Post
 - Bushes
 - Tussock
 - Shrub
 - Gate
 - Fencepost
 - Fence
 - Power line
 - Row
 - Road
 - Dam Embankment
 - Underground Pipe
 - Wind Machine
 - Line
 - Farmland
 - Dam
 - Building
 - Compound
 - Water Tank
 - Tree Stand
 - Garden
- Trees**
- Small Tree
 - Olive
 - Fig
 - Tree
 - Big Gum
 - Cal
 - Old Poplar
- Valves**
- Flush
 - Drain
 - Solenoid
 - Manual Control
 - Tap
- MacMuir Clones**
- Pinot Noir, 5
 - Pinot Noir, 843
 - Pinot Noir, 828
 - Pinot Noir, Abel
 - Pinot Noir, 105
 - Pinot Noir, 114
 - Pinot Noir, 115
 - Pinot Noir, 667
 - Pinot Noir, 777
- Calvert Clones**
- Pinot Noir, 777
 - Pinot Noir, 777
 - Pinot Noir, 777
 - Pinot Noir, 777
 - Pinot Noir, 115
 - Pinot Noir, 667
 - Pinot Noir, 667
 - Pinot Noir, 667
- Topography**
- Terrace Top
 - Terrace Toe
- Contour**
- Minor Interval (1m)
 - Major Interval (5m)



MacMuir Vineyard

Calvert Vineyard

- Soils**
- AaH - Angiour hill soils on billy land
 - Ba1a - Bannockburn moderately deep fine sandy loam on very gently sloping land
 - Ba2a - Bannockburn moderately deep silt loam + Bannockburn moderately deep fine sandy loam on very gently sloping land
 - Ba2b - Bannockburn deep silt loam on very gently sloping land
 - Ba2c - Bannockburn deep silt loam + Bannockburn moderately deep fine sandy loam on gently sloping land
 - Ba2d - Bannockburn deep silt loam on gently sloping land
 - Gm1a - German gravels on very gently sloping land
 - Gm1R - German gravels + German sand on rolling land
 - Gm1R - 1R - German gravels Compound
 - Gm2R - German gravels on rolling land
 - L2S - Lethy siltland soils, eroded variant on steep land
 - M1E - Molykuk stony sand on easy rolling land
 - M2a - Molykuk very shallow loamy sand on very gently sloping land
 - M2a - Manuheta shallow loamy sand on very gently sloping land
 - M2a - M2a - Manuheta moderately deep loamy sand + Molykuk very shallow loamy sand on very gently sloping land
 - M2a - Manuheta moderately deep loamy sand on very gently sloping land
 - OuR - 1R - Mine workings + Mine tailings on rolling land
 - OuR - Mine workings on rolling land
 - S2R - Scotland Point very deep gravelly loamy sand on rolling land



Scale: 1:1500
 Projection: NZMG
 Date: 20/04/2017
 Map Ref: s13254.GA001.200417
 Date Collected: 2003-05, 2013

This map is designed as a land management tool. While every effort has been made to maximise its accuracy and precision, it should not be used as a means of legal description.

